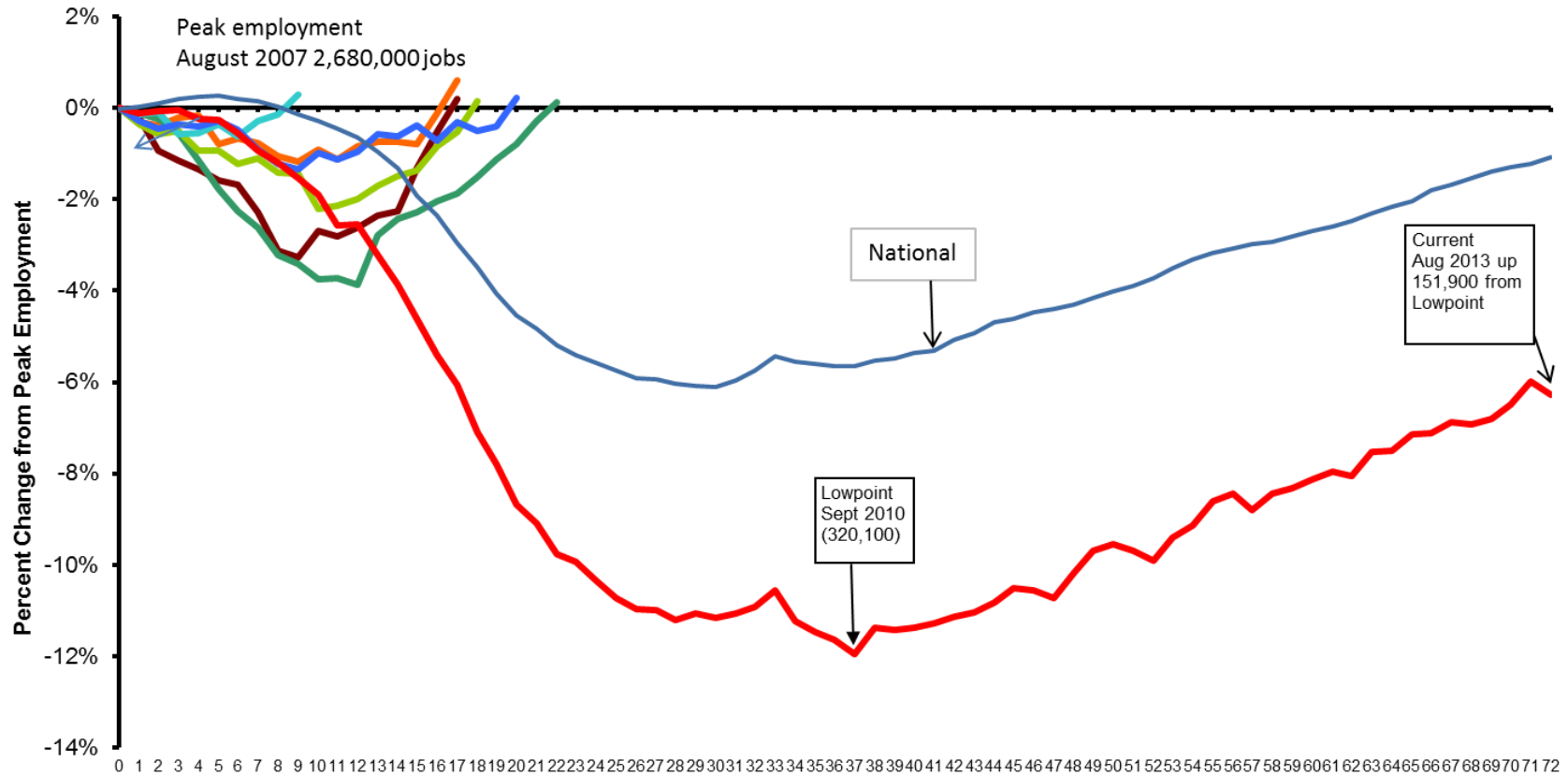


What is going on at the Capitol?

November 4, 2013

Economy

Arizona
Job Loss Non-Farm Seasonally Adjusted

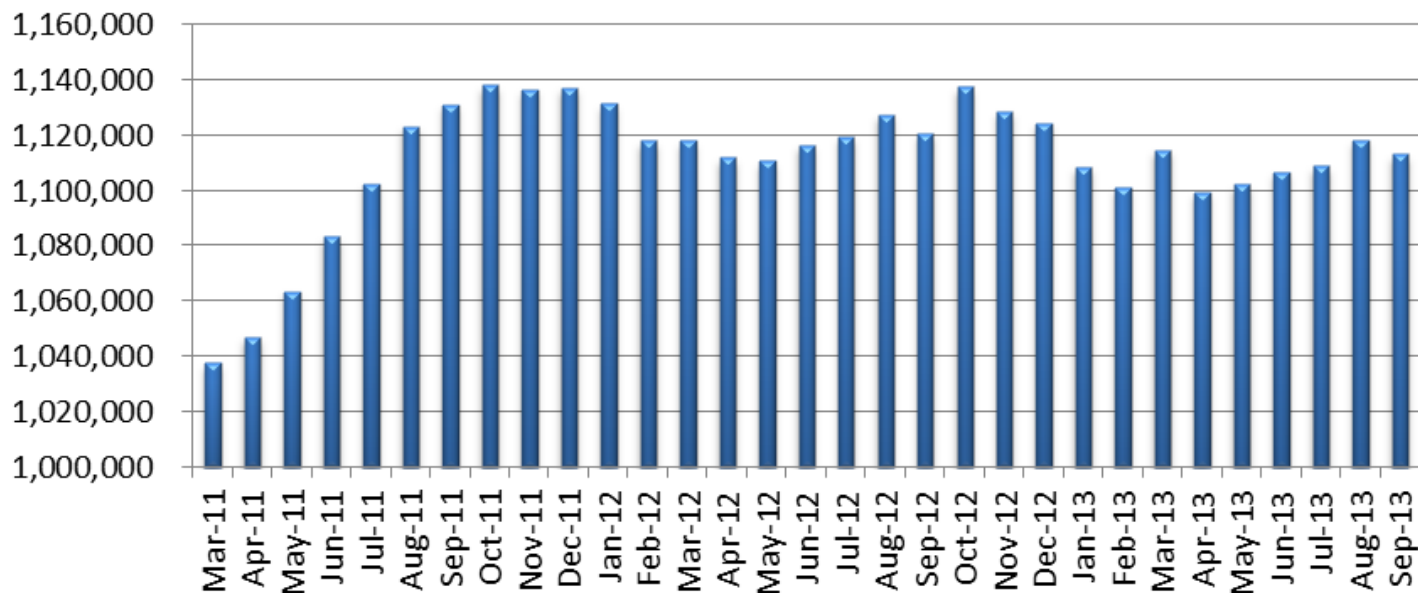


State data is published by AZ Employment and Population Statistics. Federal Data is from the US Department of Labor.

Number of Months After Peak Employment

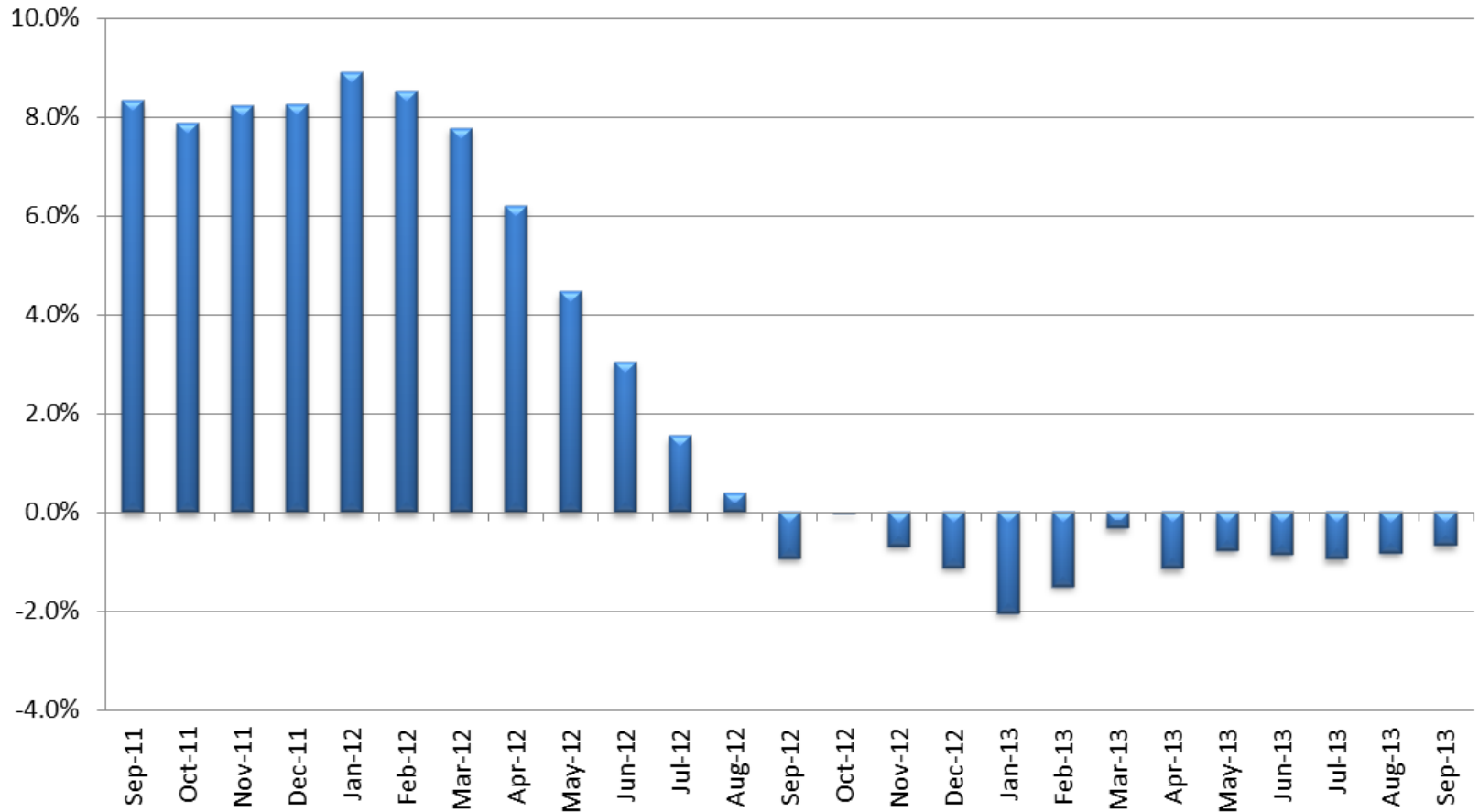
Economy - SNAP

SNAP Enrollment



Note: In August 2007, there were 565,872 people on SNAP.

Economy – SNAP – Year over Year



Revenues

FY 2013

	Projected	Actual
General Fund	2.3%	5.1%
Individual Income	5.8%	9.9%
Corporate	0.7%	2.2%
TPT	4.0%	5.1%

FY 2014 1st QTR

	Projected	Actual
General Fund	3.4%	3.9%
Individual Income	1.4%	6.6%
Corporate	3.2%	-24.2%
TPT	4.4%	7.0%

FY 2013 Ending Balance

Fiscal Year	Ending Balance	Rainy Day Fund	Total
2009	(\$480.7)	\$2.7	(\$478.0)
2010	(\$5.7)	\$0.0	(\$5.7)
2011	\$3.2	\$0.0	\$3.2
2012	\$396.9	\$250.0	\$646.9
2013*	\$895.0	\$454.1	\$1,349.1

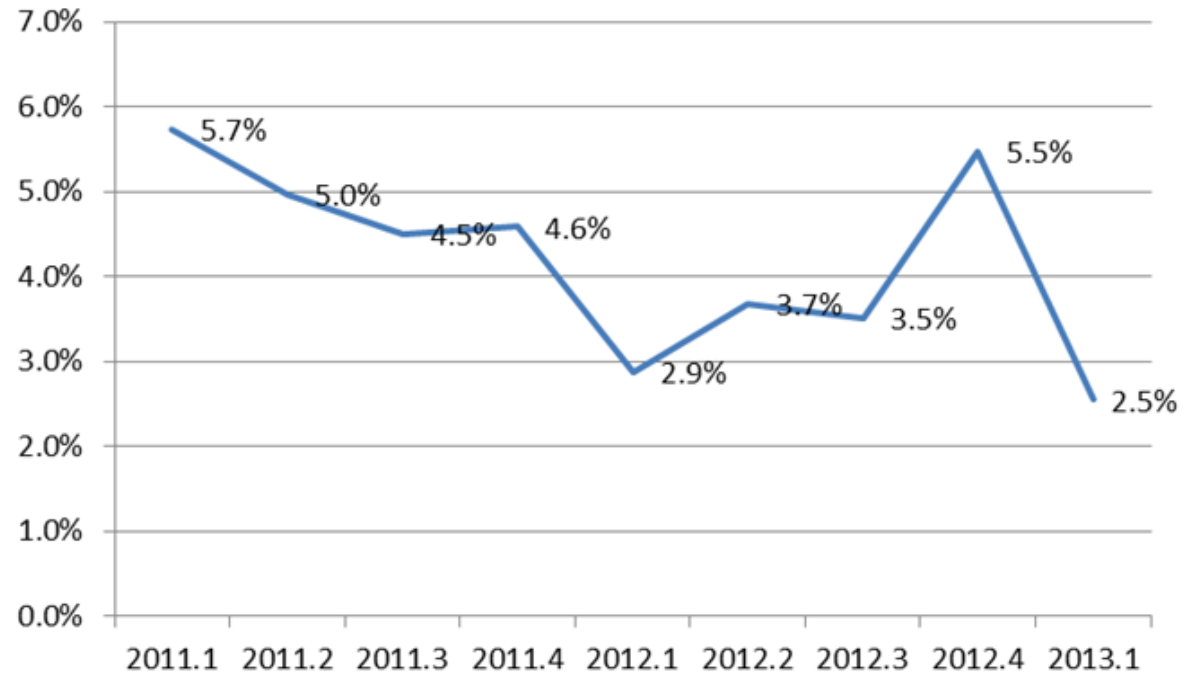
*Estimated

Individual Income

Withholding is only up 3.5%

Final Payments up 15.6%

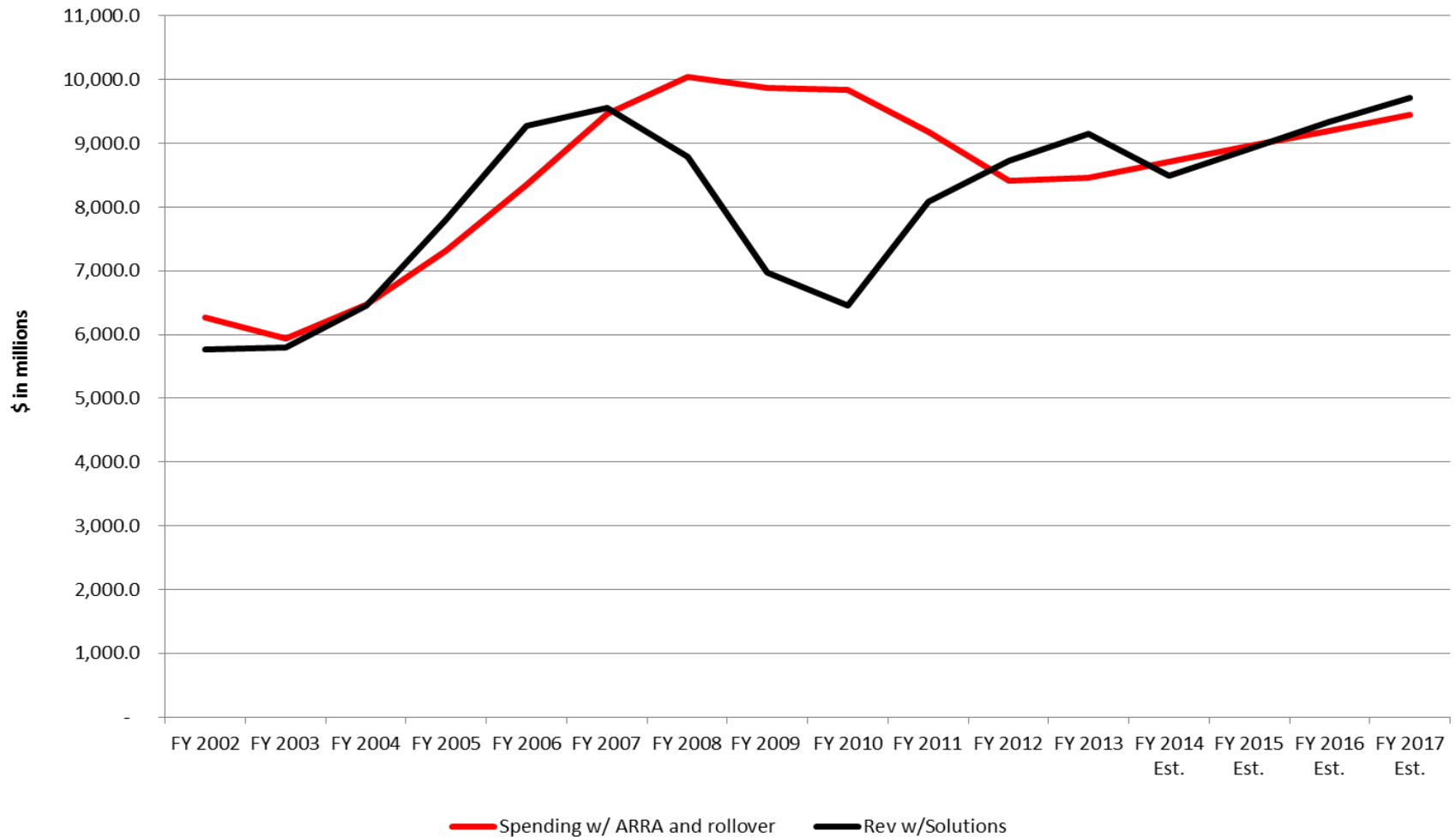
Arizona Individual Income Growth



How much is one-time?

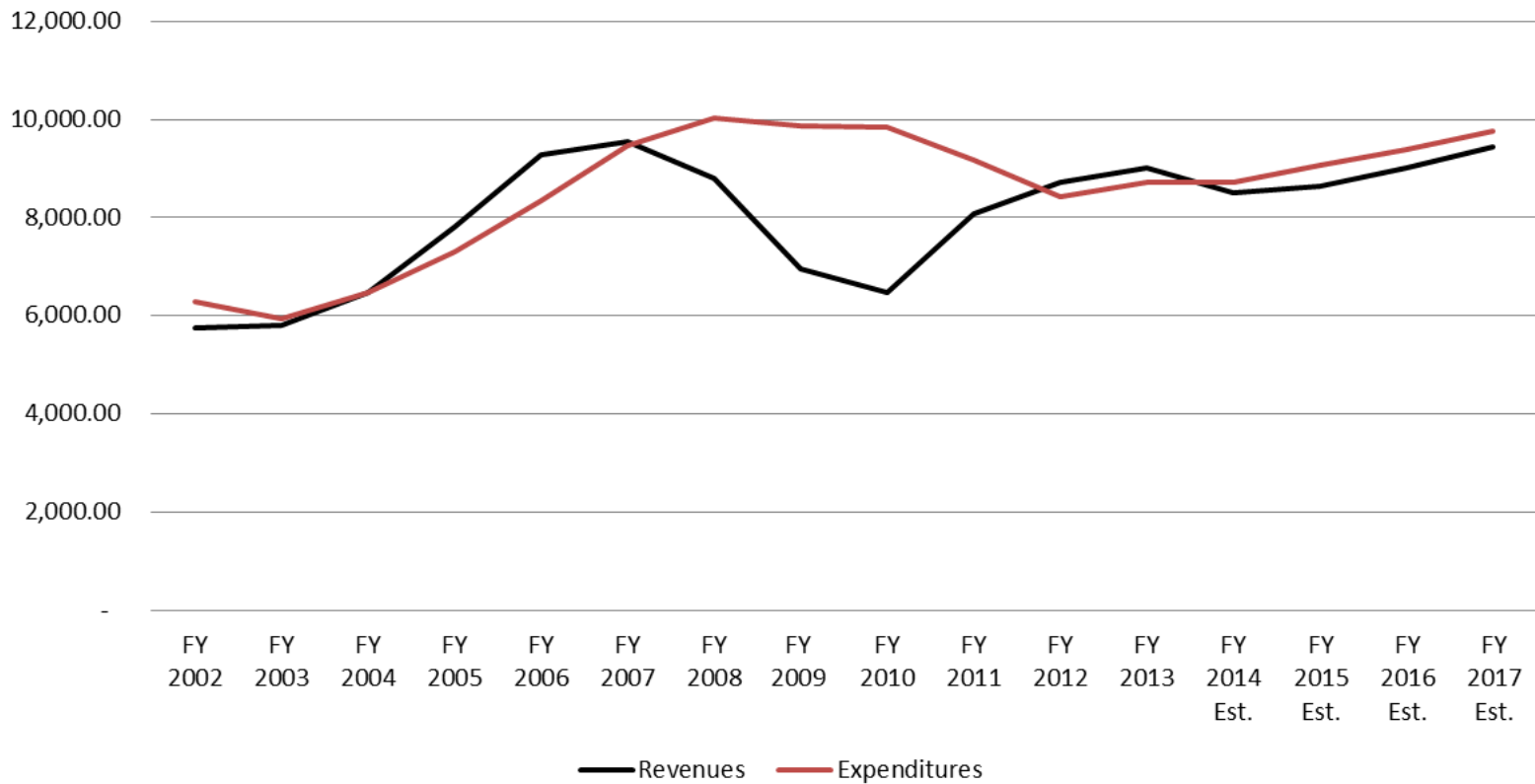
Budget: FY 2014 – FY 2017

Arizona General Fund Ongoing Expenditures and Revenues FY 2002-FY 2017



FAC Budget Projections

**Arizona General Fund Ongoing Expenditures and Revenues
FY 2002-FY 2017**



Budget Issues

- DES
- Student Success Funding
- Higher Education
- Transportation

DES - Out of Home Care Caseloads

